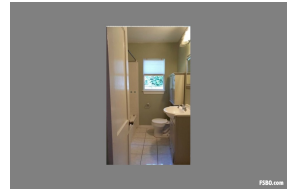
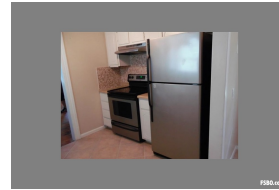
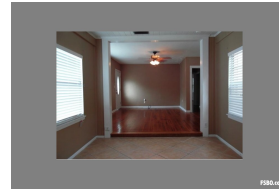


4112 Bay to Bay Blvd



\$330,000

4112 W Bay To Bay Blvd
Tampa, FL 33629
Hillsborough County

Property Description

Palma Ceia charmer! This three bedroom home located in the Plant High district of South Tampa. Original hardwood floors and was renting at \$2,000/month. Oversized kitchen with stainless steel appliances and enough room for a table. More than ample closet space throughout. The third bedroom has a step down entrance, while located on the other side of the home for a true split floor plan. Over sized lot is lusciously landscaped. The fenced in back yard has enough room to play, entertain or relax w ... **more info online**

Contact Owner:

WLW Capital LLC
5188521231
7274082223

Amenities

- Central Air
- Family Room
- Garden Area
- Tile
- Dishwasher
- Fenced Yard
- Refrigerator
- Washer/Dryer

Listing ID:	186202
Bedrooms:	3
Bathrooms:	1
Type:	Residential
Subtype:	Single Family Home
Lot Size:	7500
Sq. Feet:	1200
Year Built:	1949
School District:	Plant High