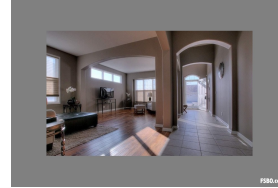


AMAZING Walk-Out Ranch with nearly 3600 square feet!



\$290,000

9403 S 28th St
Bellevue, NE 68147
Sarpy County

Property Description

This beautifully maintained walk-out ranch has a large open kitchen, stainless steel appliances, quartz counters, breakfast nook, hard wood floors, and ample storage. Large master bath features double sinks, soaking tub and tiled shower. Fully finished basement features a wet bar for entertaining, huge walk in closet in 4th bedroom, and ¾ bath. Fully fenced backyard, underground sprinkler for easy maintenance, large cement patio, and plenty of trees for privacy. ... [more info online](#)

Contact Owner:

Kelly Kreifel
4028717144

Amenities

- Breakfast Area
- Family Room
- Finished Basement
- Hardwood Floors
- Island
- Living Room
- Microwave
- Private Backyard
- Security System
- Stainless Steel Appliances
- Dishwasher
- Fenced Yard
- Granite Countertops
- Homeowner's Assoc.
- Laundry Room
- Master on Main
- Patio
- Refrigerator
- Sprinkler System
- Tile

Listing ID:	190343
Bedrooms:	5
Bathrooms:	3
Type:	Residential
Subtype:	Single Family Home
Lot Size:	1/4 acre
Sq. Feet:	3583
Year Built:	2005
School District:	Bellevue
Subdivision:	Sunrise